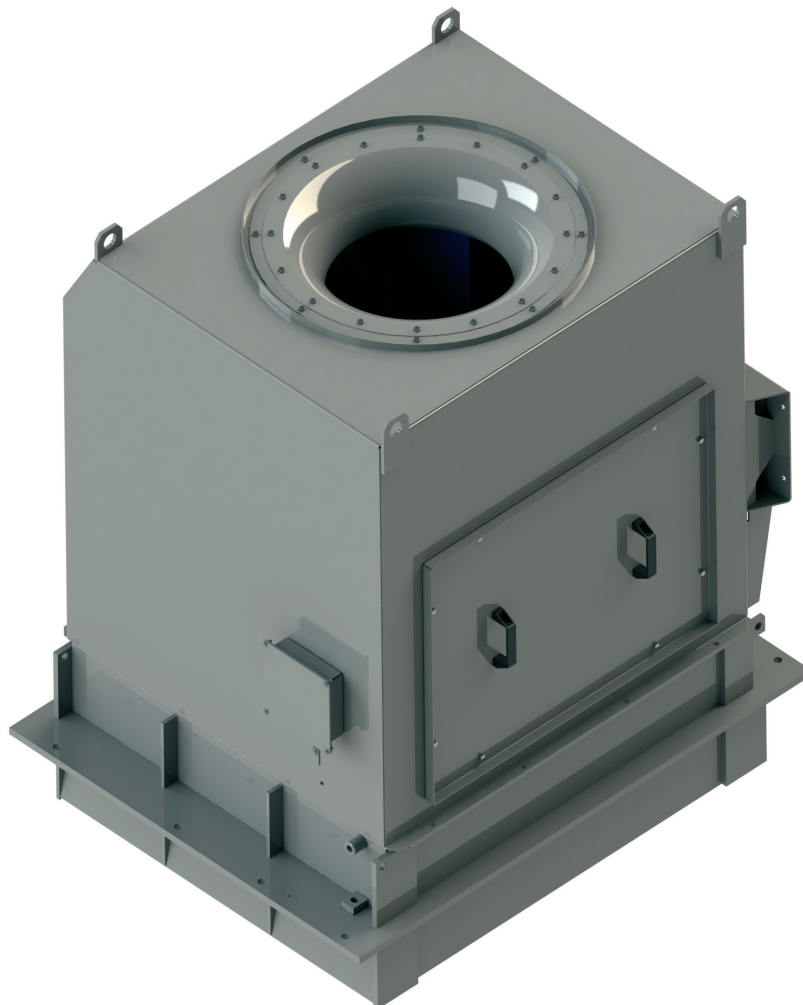


Cooling Tower



Locomotive Cooling Tower

The Cooling Tower is designed, developed and produced in IRIS-Certified manufacturing site LEEL Bhiwadi in India. It is two sections, aluminum micro channel-radiator based cooler for heat transfer of hot oil. The first section cools-down the heat produced by 3 phase 6.000 HP transformer, and the second section cools down the power inverter. It is designed for WAG-9 50 Hz AC Locomotives manufactured by Chittaranjan Locomotive Works. Cooling capacity of the converter section is 116kW and the transformer section is 120 kW. Heat load is dissipated by airflow of entering temperature of 47°C. Aluminum impeller is designed, produced and manufactured by Janka Engineering, Prague in Czech Republic, and it delivers airflow of 29.340 m³/h.



Technical data

Cooling Tower Locomotive Cooling Tower

Customer Platform	CLW WAG-9 Locomotive
Area of operation	India
Cooling capacity	116 kW Converter 120 kW Transformer
Heating capacity	no heating
Air Flow	29 340 m³/h
Length Width Height	1450 mm 1154 mm 1770 mm
Weight	854 kg
Power supply	3x 415 V AC / 50 Hz

