

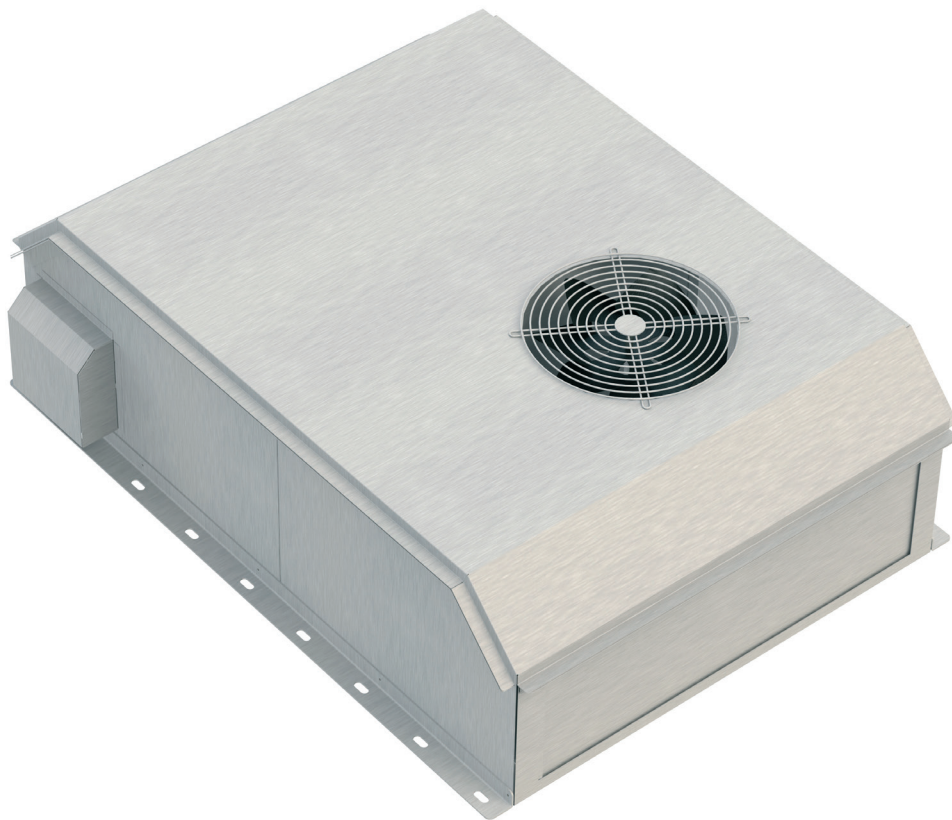
# CAB Loco 2TR



## Driver's cabine HVAC unit

---

The cabin heating and ventilation unit is a stainless steel unit, designed, developed and produced in IRIS-Certified manufacturing site LEEL Bhiwadi in India. Its design is made in accordance with the requirements of Chittaranjan Locomotive Works for EMU locomotive manufactured and operated in India. The main features are high reliability and easy maintenance.



# Technical data

## CAB Loco 2TR Driver's cabine HVAC unit

<b>Customer   Platform</b>	<b>CLW   EMU loco</b>
<b>City of operation</b>	<b>India</b>
<b>Cooling capacity</b>	<b>7,0 kW</b>
<b>Heating capacity</b>	<b>2,0 kW</b>
<b>Air Flow</b>	<b>1 000 m<sup>3</sup>/h</b>
<b>Length   Width   Height</b>	<b>3 400 mm   2 070 mm   450 mm</b>
<b>Weight</b>	<b>200 kg</b>
<b>Power supply</b>	<b>3x 415 V AC / 50 Hz</b>

